

LISMORE

Cabinet:

Moisture resistant melamine board
 Cabinet colour - White
 Cabinet height - 790mm (plus top)
 Cabinet availability - see specification on following page
 Ceramic Knobs
 Chrome or Gold Backing Plates
 Shelf
 Trimmed with a 32mm groove forming a square pattern on the doors -
 and drawer set
 Metal door hinges
 Metal drawer runners
 Durashield doors @ 558mm high
 Durashield drawers in a bank of 3 @ 184mm high
 Durashield splash panel @ 90mm high, or 160mm high for semi-recessed

Optional extras (at extra charge) for this cabinet:

Available in:

- Deluxe Height (extra 50mm)
- Wall hung
- Legs
- Other colours - Ivory
- Chrome or gold knobs / handles

Top:

Available colours - White or Ivory

Optional extras (at extra charge) for these tops:

Amastone top - Charcoal, Ivory Sand, Palamino Grey, Aqua Jade
 or Bermuda Blue



Pictured is a 1215 x 470 3door 3draw lismore

LISMORE

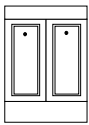
| TOP SIZE | No. of Doors | No. of Drawers | Width MM | Height of Cabinet MM | Depth on Floor MM | Weight of Cabinet KG | Weight Incl. Top MM |
|----------------------------------|--------------|----------------|-------------------------|----------------------|-------------------|----------------------|---------------------|
| ENSUITE | | | | | | | |
| 610 x 310 | 2 | 0 | 591 | 790 | 291 | 17.0 | 29.9 |
| 610 x 310 | 1 | 3 | 591 | 790 | 291 | 21.8 | 30.3 |
| 610 x 350 | 2 | 0 | 591 | 790 | 319 | 17.8 | 29.8 |
| 610 x 350 | 1 | 3 | 591 | 790 | 319 | 22.7 | 34.7 |
| 760 x 350 | 2 | 0 | 740 | 790 | 319 | 20.8 | 33.8 |
| 760 x 350 | 1 | 3 | 740 | 790 | 319 | 25.6 | 38.6 |
| 910 x 350 | 2 | 0 | 887 | 790 | 319 | 23.7 | 40.7 |
| 910 x 350 | 2 | 3 | 887 | 790 | 319 | 28.5 | 45.5 |
| OVAL (Single centre bowl) | | | | | | | |
| 610 x 470 | 2 | 0 | 591 | 790 | 426 | 21.5 | 35.5 |
| 610 x 470 | 1 | 3 | 591 | 790 | 426 | 28.3 | 42.3 |
| 760 x 470 | 1 | 3 | 740 | 790 | 426 | 31.5 | 45.5 |
| 910 x 470 | 2 | 0 | 887 | 790 | 426 | 28.3 | 44.3 |
| 910 x 470 | 2 | 3 | 887 | 790 | 426 | 34.9 | 50.9 |
| 1215 x 470 | 2 | 3 | 1185 | 790 | 426 | 41.6 | 56.9 |
| 1215 x 470 | 2 | 6 | 1185 | 790 | 426 | 48.2 | 63.5 |
| 1215 x 470 | 3 | 3 | 1185 | 790 | 426 | 44.1 | 59.4 |
| 1500 x 470 | 4 | 3 | 1481 | 790 | 426 | 51.9 | 81.9 |
| 1500 x 470 | 2 | 6 | 1481 | 790 | 426 | 54.9 | 84.9 |
| 1500 x 470 | 3 | 6 | 1481 | 790 | 426 | 56.1 | 86.1 |
| 1800 x 470 | 4 | 0 | 1774 | 790 | 426 | 55.5 | 92.5 |
| 1800 x 470 | 4 | 6 | 1774 | 790 | 426 | 74.2 | 111.2 |
| OVAL (Double bowl) | | | | | | | |
| 1500 x 470 | 4 | 3 | Uses 1500 x 470 Cabinet | | | | 82.9 |
| 1500 x 470 | 2 | 6 | Uses 1500 x 470 Cabinet | | | | 85.9 |
| 1500 x 470 | 3 | 6 | Uses 1500 x 470 Cabinet | | | | 87.1 |
| 1800 x 470 | 4 | 0 | Uses 1800 x 470 Cabinet | | | | 93.5 |
| 1800 x 470 | 4 | 6 | Uses 1800 x 470 Cabinet | | | | 112.2 |
| VOGUE | | | | | | | |
| 910 x 470 | 2 | 0 | Uses 910 x 470 Cabinet | | | | 47.7 |
| 910 x 470 | 2 | 3 | Uses 910 x 470 Cabinet | | | | 54.3 |
| 1215 x 470 | 2 | 3 | Uses 1215 x 470 Cabinet | | | | 60.3 |
| 1215 x 470 | 3 | 3 | Uses 1215 x 470 Cabinet | | | | 66.9 |
| 1215 x 470 | 2 | 6 | Uses 1215 x 470 Cabinet | | | | 62.8 |
| BANJO | | | | | | | |
| 1550 x 470 (L/R) | 1 | 3 | Uses 760 x 470 Cabinet | | | | 56.5 |
| 1910 x 470 (L/R) | 2 | 0 | Uses 910 x 470 Cabinet | | | | 55.3 |
| 1910 x 470 (L/R) | 2 | 3 | Uses 910 x 470 Cabinet | | | | 61.9 |
| CORNER UNIT | | | | | | | |
| 610 x 610 | 1 | 0 | 528 | 790 | 213 | 23.2 | 36.7 |
| 900 x 900 | 3 | 0 | 296+528+296 | 790 | 213 | 40.6 | 62.1 |
| 900 x 900 | 2 | 3 | 296+528+296 | 790 | 213 | 44.6 | 66.1 |
| 900 x 900 | 1 | 6 | 296+528+296 | 790 | 213 | 48.6 | 70.1 |
| 915 x 615 (L/R) | 2 | 0 | 528+296 | 790 | 213 | 31.9 | 48.9 |
| 915 x 615 (L/R) | 1 | 3 | 528+296 | 790 | 213 | 35.9 | 52.9 |

LISMORE

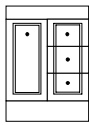
| TOP SIZE | No. of Doors | No. of Drawers | Width MM | Height of Cabinet MM | Depth on Floor MM | Weight of Cabinet KG | Weight Incl. Top MM |
|-----------------------------|--------------|----------------|-------------------------|----------------------|-------------------|----------------------|---------------------|
| SEMI RECESSED | | | | | | | |
| <i>(Single centre bowl)</i> | | | | | | | |
| 610 x 290 | 2 | 0 | 591 | 810 | 260 | 16.5 | 29.5 |
| 610 x 290 | 1 | 3 | 591 | 810 | 260 | 21.0 | 34.0 |
| 760 x 290 | 2 | 0 | 740 | 810 | 260 | 19.4 | 34.4 |
| 760 x 290 | 1 | 3 | 740 | 810 | 260 | 23.8 | 38.8 |
| 910 x 290 | 2 | 0 | 887 | 810 | 260 | 22.3 | 40.3 |
| 910 x 290 | 2 | 3 | 887 | 810 | 260 | 26.6 | 44.6 |
| 1215 x 290 | 2 | 3 | 1185 | 810 | 260 | 32.4 | 52.4 |
| 1215 x 290 | 2 | 6 | 1185 | 810 | 260 | 36.7 | 56.7 |
| 1215 x 290 | 3 | 3 | 1185 | 810 | 260 | 34.1 | 54.1 |
| 1500 x 290 | 4 | 3 | 1481 | 810 | 260 | 39.8 | 62.8 |
| 1500 x 290 | 2 | 6 | 1481 | 810 | 260 | 42.5 | 65.5 |
| 1500 x 290 | 3 | 6 | 1481 | 810 | 260 | 43.0 | 66.0 |
| 1800 x 290 | 4 | 0 | 1774 | 810 | 260 | 43.7 | 69.6 |
| 1800 x 290 | 4 | 6 | 1774 | 810 | 260 | 56.7 | 83.2 |
| SEMI RECESSED | | | | | | | |
| <i>(Double bowl)</i> | | | | | | | |
| 1500 x 290 | 4 | 3 | Uses 1500 x 290 Cabinet | | | | 66.8 |
| 1500 x 290 | 2 | 6 | Uses 1500 x 290 Cabinet | | | | 69.5 |
| 1500 x 290 | 3 | 6 | Uses 1500 x 290 Cabinet | | | | 70.0 |
| 1800 x 290 | 4 | 0 | Uses 1800 x 290 Cabinet | | | | 73.6 |
| 1800 x 290 | 4 | 6 | Uses 1800 x 290 Cabinet | | | | 87.2 |
| SHAVING CABINET | | | | | | | |
| 720 x 300 | 1 | 0 | 293 | 720 | 152 | 9.4 | - |

LISMORE

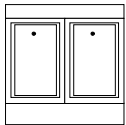
Available Configurations:



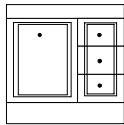
610



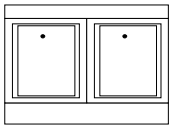
610



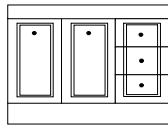
760



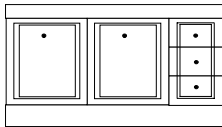
760



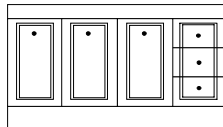
910



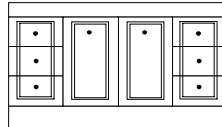
910



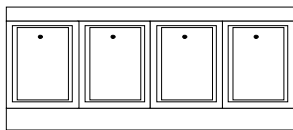
1215



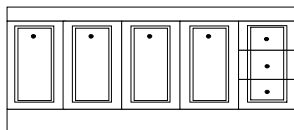
1215



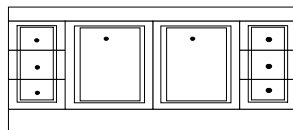
1215



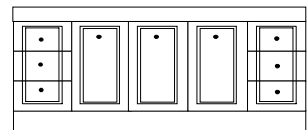
1500



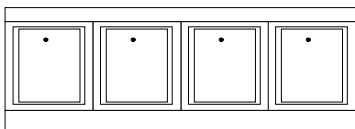
1500



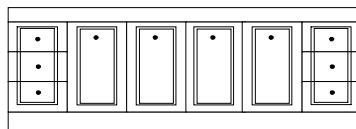
1500



1500



1800



1800