

T1000

Cabinet:

Moisture resistant timber grain melamine board
Cabinet colour - Blackwood or Jarrah
Timbergrain melamine sides, splash and kick panel
Cabinet height - 790mm (plus top)
Cabinet availability - see specification on following page
Chrome T-bar handles
Shelf
Metal door hinges
Timber doors @ 558mm high
Ply timber centre panel in doors
Doors finished in clear lacquer
Arch on top of doors with thumb mould edges

Optional extras (at extra charge) for this cabinet:

Available in:

Wall hung
Legs
Chrome or gold knobs / handles

Top:

Slab available colours - White, charcoal, opal, tungsten, firefly
Kewb basin available colours - White



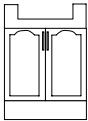
Pictured is a 610 x 290 2door T1000 in Jarrah

T1000

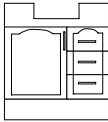
TOP SIZE	No. of Doors	No. of Drawers	Width MM	Height of Cabinet MM	Depth on Floor MM	Weight of Cabinet KG	Weight Incl. Top MM
SEMI - RECESSED KEWB							
600	2	0	*	790	291	18.1	20.1
700	1	3	*	790	291	25.8	28.8
900	2	0	*	790	291	28.0	33.0
900	2	3	*	790	291	29.0	34.0
1200	2	3	*	790	319	22.7	34.7

* Specification subject to change without notice. If size is essential ring before ordering.

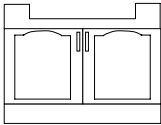
Available Configurations:



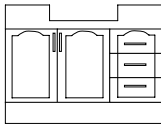
600



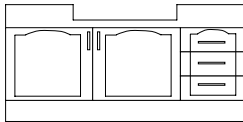
700



900



900



1200